

RENAULT WIND



(www.renault.ie) / (www.renault.tv/en)

PHOTO CREDITS: P. HARVEY, R. SCHOEHNS, P. QUIET - PRINTED IN EC - OCTOBER 2010
RENAULT Ireland, Unit 39 Boeing Road, Airways Industrial Estate, Senny, Dublin 17, Ireland.

RENAULT WIND



The utmost has been done to ensure that the content of this publication is accurate and up-to-date when going to press. This document has been created on the basis of pilot lots and prototypes. As part of its ongoing product improvement policy, Renault reserves the right to modify the specifications, vehicles and accessories described and shown at any time. Such modifications are communicated to Renault dealers as quickly as possible. Depending on the country of sale, certain versions may differ and certain equipment may be unavailable (as standard, optional or accessory). Please contact your nearest dealer for the latest information. For printing reasons, the colours which appear in this document may differ slightly from the actual paint and the upholstery colours. All rights reserved. It is forbidden to reproduce in any format and by any means all or part of this publication without prior written authorisation from Renault.

DRIVE THE CHANGE



RENAULT WIND - OPEN YOUR EYES TO AN ORIGINAL, SPORTY, STUNNING DESIGN. DROP THE ROOF IN 12 SECONDS FLAT. SAVOUR THE PLEASURE OF BEING AT ONE WITH YOURSELF, AND AT ONE WITH THE OPEN AIR.

Breaking news ! Renault Wind rewrites the rules for coupé-roadsters. Its chic design and compact size are astounding. Roof up or down, it's guaranteed showtime Freedom! We kick-started it with a very smart idea: a pivoting, electric hard-top roof. Result ? It opens in just 12 seconds to transform the coupé into a roadster. And vice versa. Simple, practical, and super-quick ? Certainly. But here's the twist. Incredibly, the boot still keeps its same storage space of 270 litres even when the roof is stowed. Nothing else even comes close. The thrum of its sports-sounding engine acoustic, rigid chassis and superb balance are the spicy ingredients that conjure up a dynamic and precise drive. Where will your playground be ? In the city or out on the open road ? But hang on... who said you had to choose ?



OPEN & PLAY



EQUIPMENT

Main standard equipment
3 years / 100.000 km warranty
2 x 35W radio single CD MP3 reader and fingertip remote control
Bluetooth connectivity
Steering wheel - power assisted variable
ABS with EBD (Electronic Brake Distribution)
Airbags - front driver and passenger
Airbags - lateral driver and passenger
Cruise control and speed limiter
Remote central locking with deadlocking
Trip computer

Electric windows
Manual air conditioning
Front fog lights
16" alloy wheels
Door mirrors - electrically adjustable and heated - gloss black
Rear spoiler
Specific chromium exhaust
Leather gear knob and height adjustable steering wheel
Height adjustable sports style seats with integrated headrests
Spare wheel

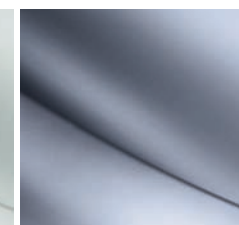
Options
Metallic paint
Pack look with gloss black retractable roof
17" alloy wheels
Climate control with automatic headlights and rain sensors
Plug & Music (USB connection)
Full leather / leather type, heated seats

DYNAMIQUE

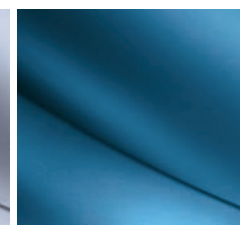
COLOURS



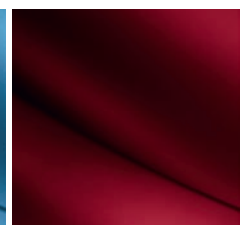
GLACIER WHITE (NM 369)



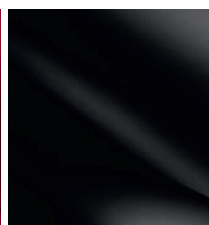
GREY MIRAGE (MP KNK)



AZURRO BLUE (MP TER)



RUBY RED (MP NNJ)



BLACK (MP 676)

WHEELS



16" ALLOY WHEELS



17" ALLOY WHEELS

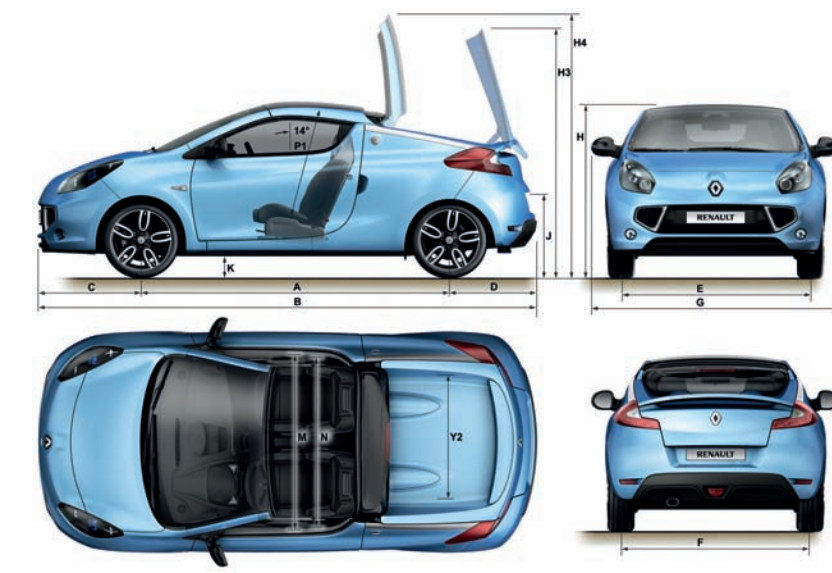
TRIMS



DYNAMIQUE

A dark grey interior with sports style seats with extra lateral support and a modern, dynamic dashboard design. Chrome instrument surrounds, black translucent instrument visor, leather steering wheel and leather gear lever... The Wind roadster adopts a neat and indisputably sporty style.

DIMENSIONS



WIND ROADSTER DIMENSIONS		2 DOORS
Boot volume (litres) VDA / ball bearings		270/360
DIMENSIONS (mm)		
A	Wheelbase	2368
B	Overall length	3833
C	Front overhang	797
D	Rear overhang	668
E	Front track	1451
F	Rear track	1430
G	Overall width / with door mirrors	1689 / 1913
H	Overall height	1381
H3	Height with roof open	1945
H4	Height with roof open in maximum high position	2052
J	Height threshold of boot	755
K	Ground clearance	120
M	Front elbow width	1400
N	Front shoulder width	1320
P1	Headroom at 14°	868
Y2	Interior width between wheel arches	960